

Commercial Development Sites #1000 & #800 Haigis Parkway @ I-95 Exit 42

Scarborough, Maine



Several visible locations from I-95 Exit 42 and the Payne Road. Exceptional development opportunities with over 2,400' of contiguous frontage, level topography, state of the art infrastructure and approximately 39 acres in total; 3 properties can be purchased separately or in total. Ideal Retail, Medical, Restaurant, Office, Hotel or mixed use sites. Situated next to the new Cabela's Shopping Center and over 300,000sf of planned retail and mixed use (approximately 200,000sf completed). Near the Maine Mall, Scarborough Downs, Shaw's, Wal-Mart, Sam's, The Portland Jetport and U.S. Route 1. More land available, Documents include: Survey, wetlands and zoning. Scarborough Tax Map R-52

The Real Estate Store

APPLEBEE COMMERCIAL

252 U.S. Route One Scarborough ME 04074

contact

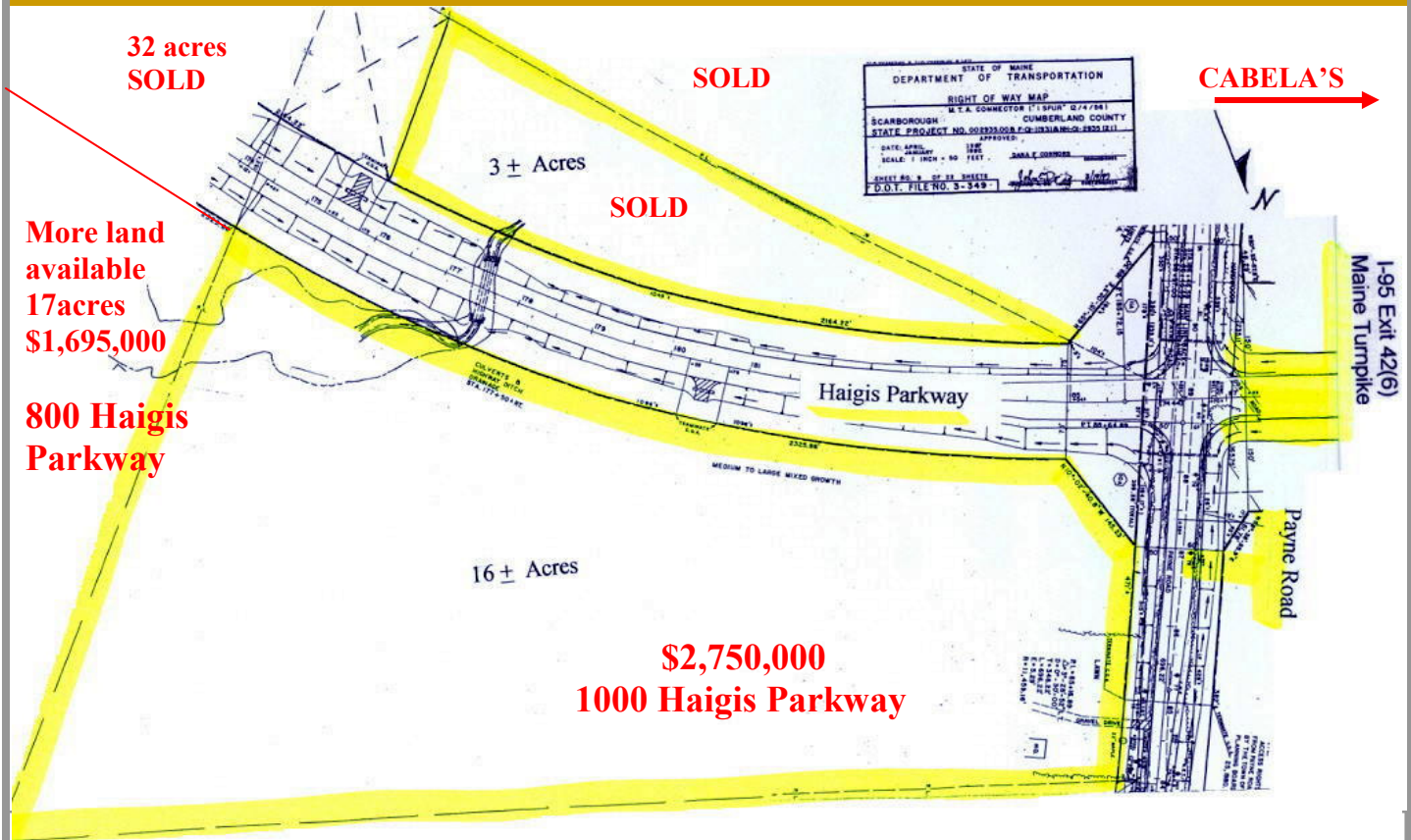
Jerry Applebee
207-883-3333

jerry@applebeecommercial.com

The Real Estate Store Applebee Commercial is representing the Seller/Landlord in the marketing, negotiation, and sale and/or lease of these properties. While information furnished is from sources deemed reliable, no warranty or representation, express or implied, is made as to the accuracy of information contained herein, and same is submitted subject to errors, omissions, change of price, rental or other conditions, withdrawal without notice, and to any special listing conditions imposed by our principals.

Commercial Development Sites I-95 (Maine Turnpike) Exit 42 and Payne Road

Scarborough, Maine



Location:	Next to Developing Retail - 67,000 Turnpike vehicles per day
• Topography:	Flat to slight slopes, Wooded
• Access:	I-95 Maine Turnpike, U.S. Route 1, Payne Road
• Sewer:	Scarborough Sewer District
• Water:	Portland Water District
• Power:	Central Maine Power
• Cable:	Time Warner
• Zone:	Haigis Parkway Zone (Office, Medical, Retail, Commercial)
• Natural Gas:	Northern Utilities
• Price:	16A - \$2,750,000
• Price:	17A - \$1,695,000
• Price:	6A - \$695,000

The Real Estate Store

APPLEBEE COMMERCIAL

252 U.S. Route One Scarborough ME 04074

contact

Jerry Applebee
207-883-3333

jerry@applebeecommercial.com

Cabela's (opened May 2008) and surrounding opportunities

